

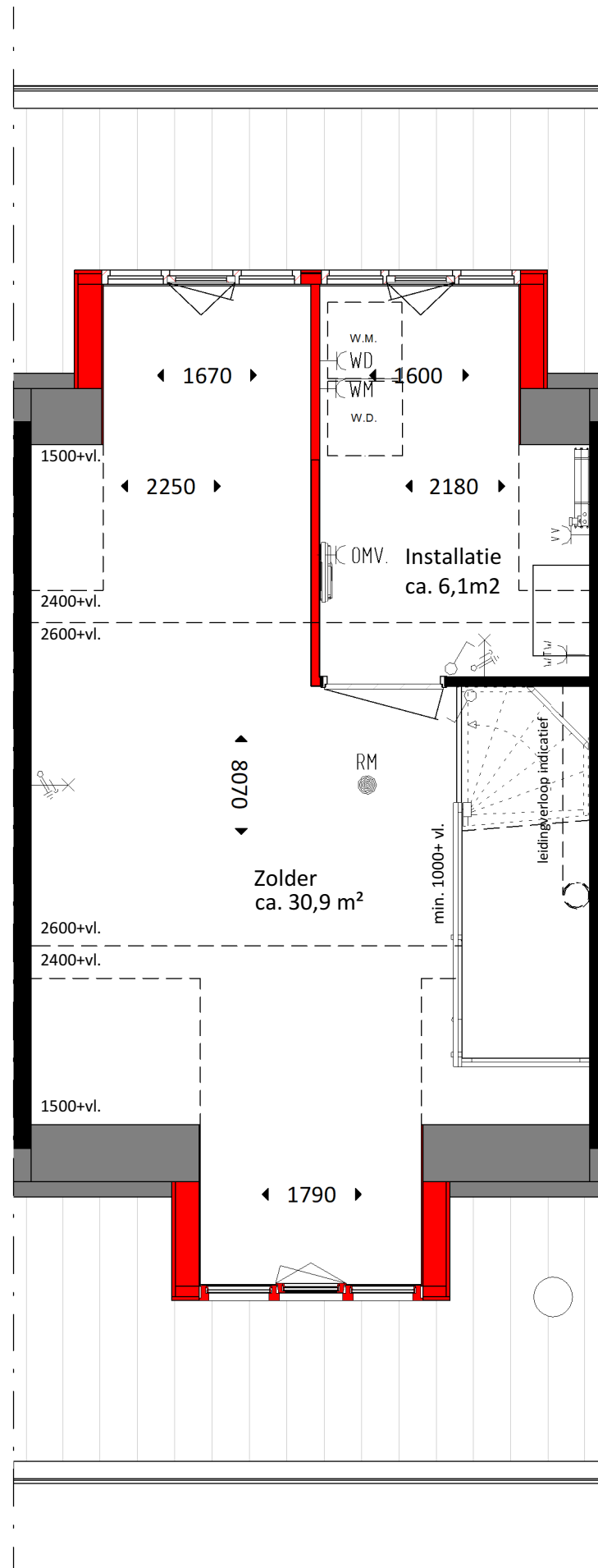
# OPTIE TEKENINGEN WONINGTYPE AA HOF-WONING, BLOK 7

Betreft de woningen met het volgende bouwnummer:

45, 47 en 48

Gespiegeld:

43, 44 en 46



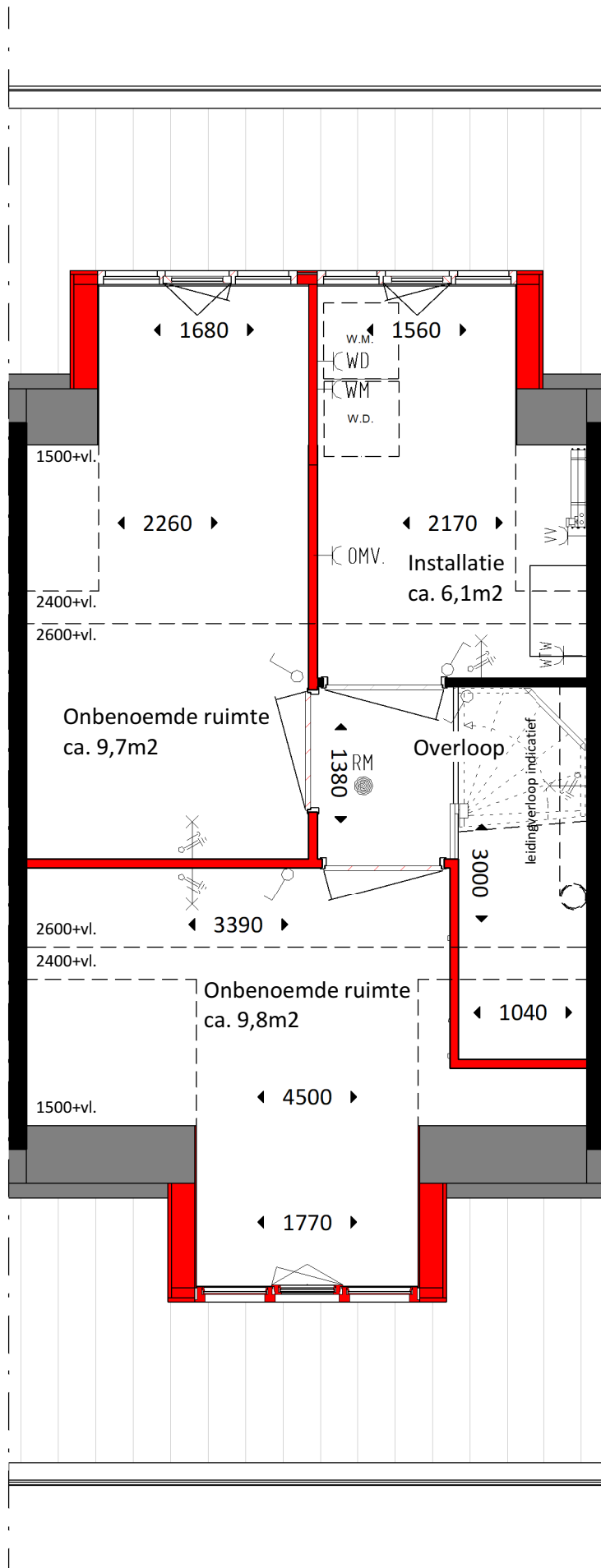
PARK RIJNSOEVER FASE 3 | WONINGTYPE AA, 2e VERDIEPING, OPTIE DAKKAPellen

02-03-2020 | 16165 | BLOK 7 | TYPE AA  
 CAMPRI VASTGOED B.V.



schaal 1:50

KVDK | KORBEE VAN DER KROFT ARCHITECTEN BNA

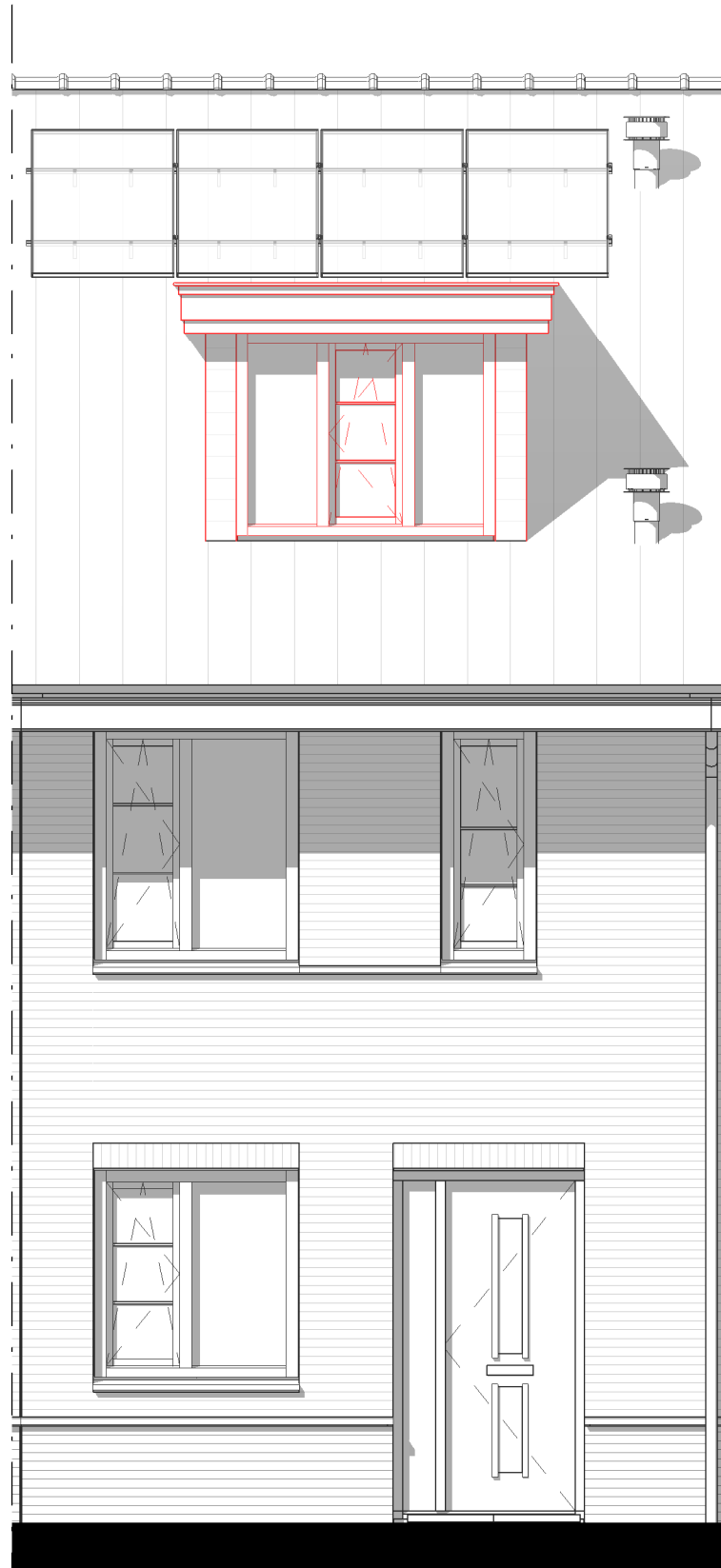


**PARK RIJNSOEVER FASE 3 | WONINGTYPE AA, 2e VERDIEPING, OPTIE INDELING EN DAKKAPellen**

02-03-2020 | 16165 | BLOK 7 | TYPE AA  
 CAMPRI VASTGOED B.V.



schaal 1:50



b.k. nok 10000 +

2e verdieping 5900 +

1e verdieping 2950 +

peil= 0



b.k. nok 10000 +

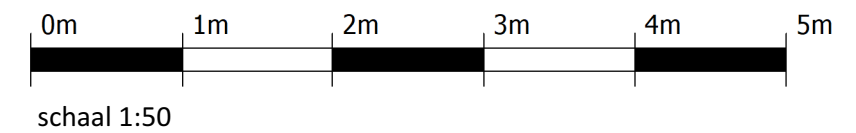
2e verdieping 5900 +

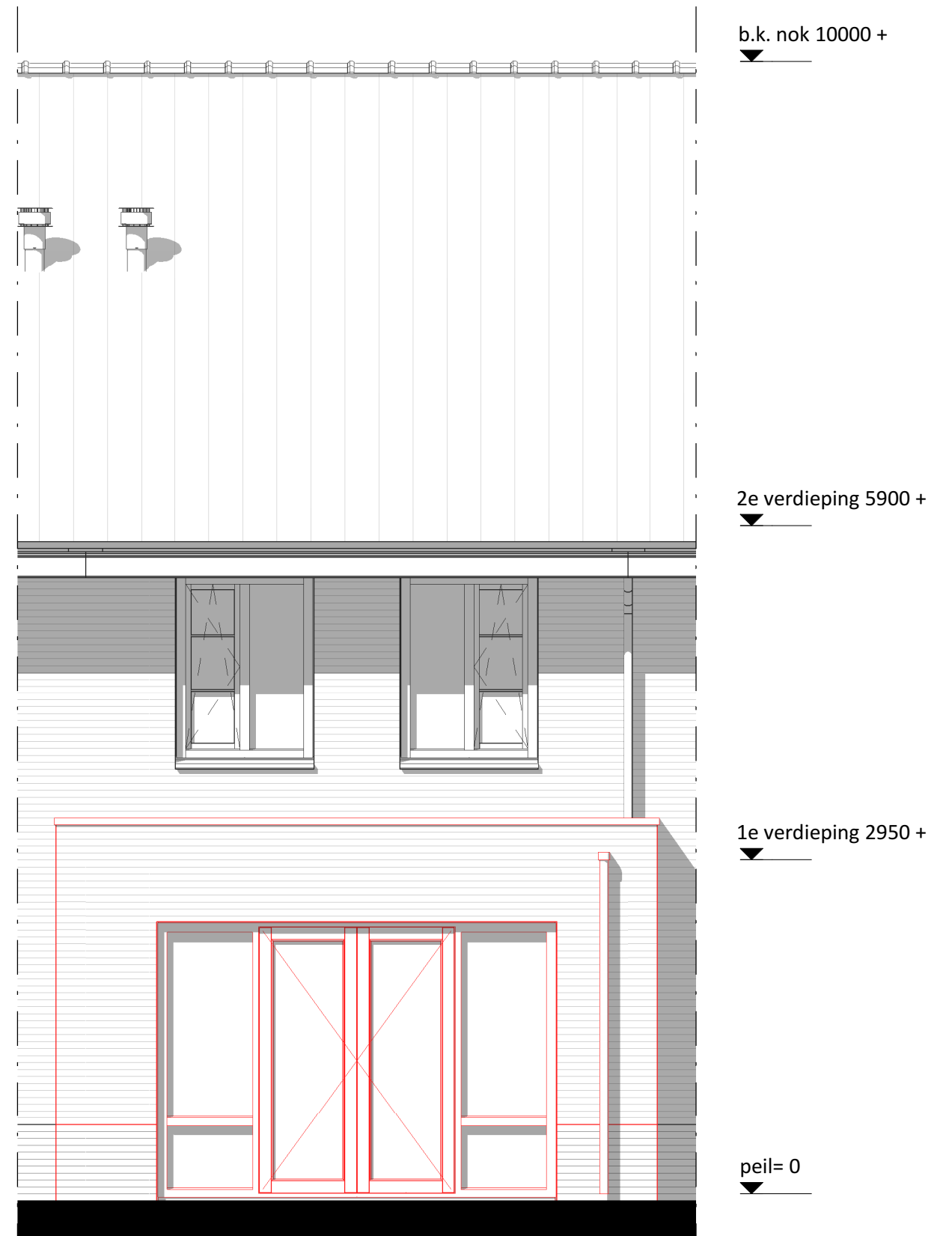
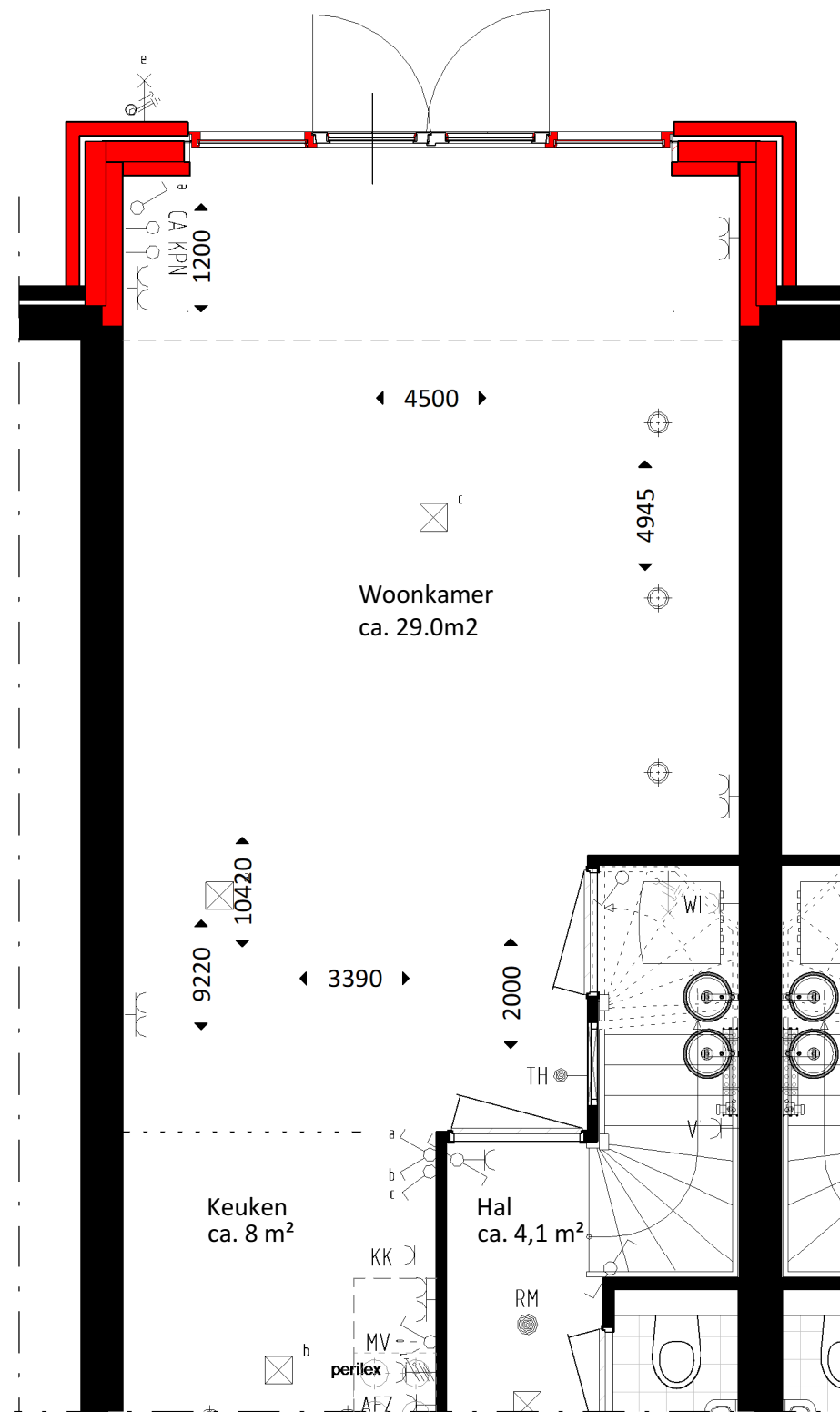
1e verdieping 2950 +

peil= 0

# PARK RIJNSOEVER FASE 3 | WONINGTYPE AA, VOOR- EN ACHTERGEVEL, OPTIE DAKKAPELLEN

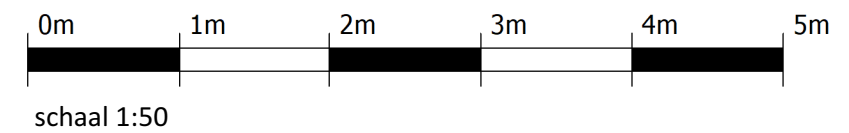
02-03-2020 | 16165 | BLOK 7 | TYPE AA  
CAMPRI VASTGOED B.V.

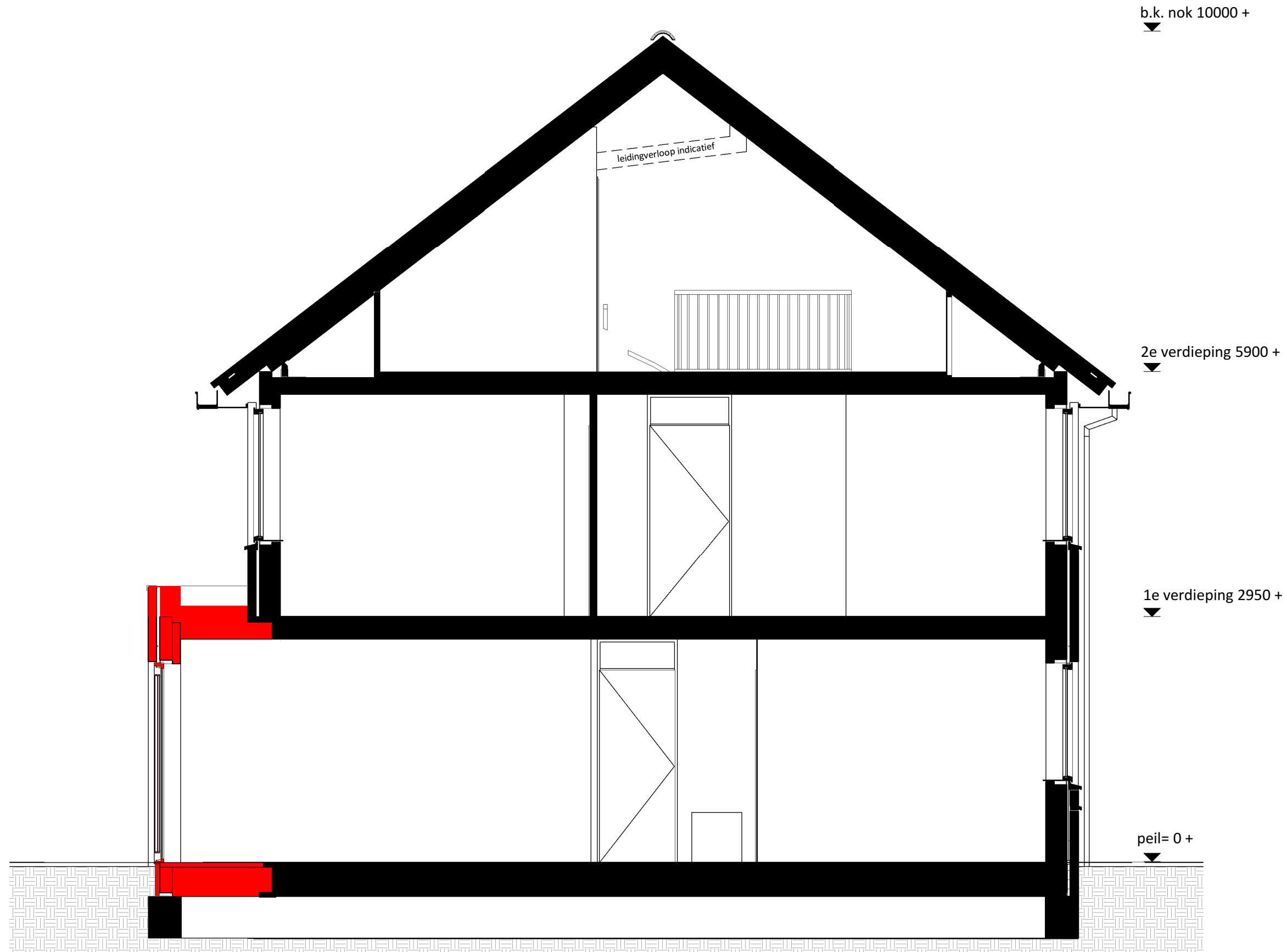




PARK RIJNSOEVER FASE 3 | WONINGTYPE AA, BEGANE GROND, UITBOUW 1200 MM

02-03-2020 | 16165 | BLOK 7 | TYPE AA  
 CAMPRI VASTGOED B.V.

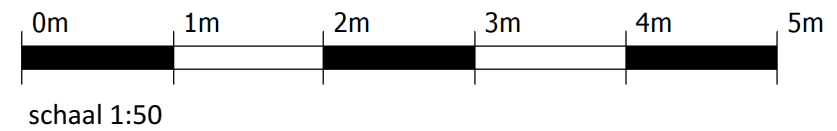




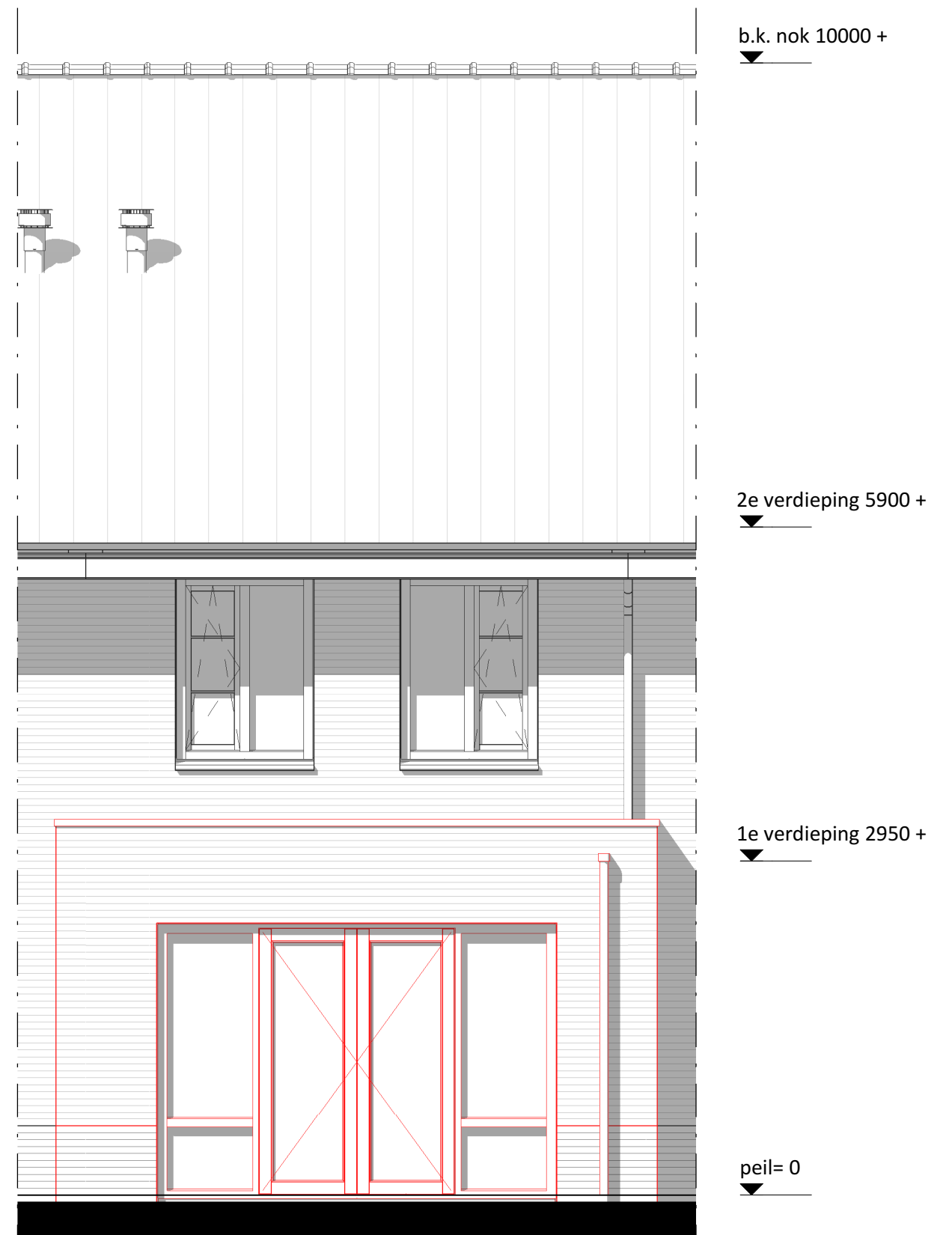
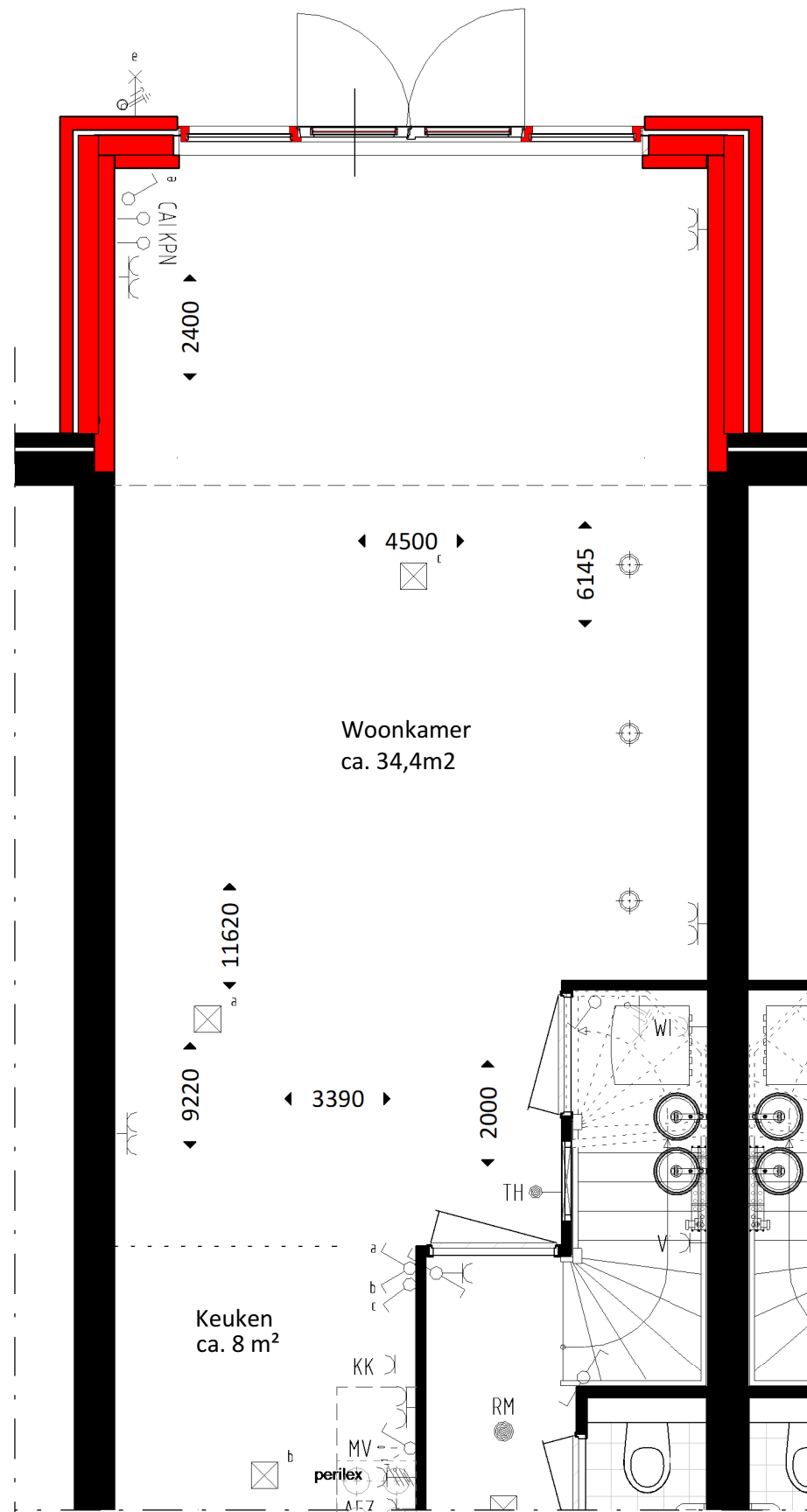
PARK RIJNSOEVER FASE 3 | WONINGTYPE AA, DOORSNEDE, UITBOUW 1200 MM

02-03-2020 | 16165 | BLOK 7 | TYPE AA

CAMPRI VASTGOED B.V.

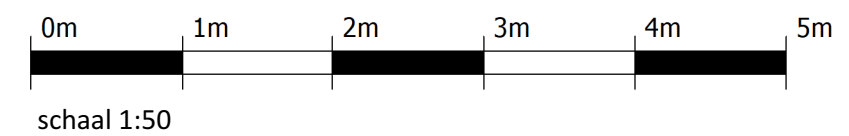


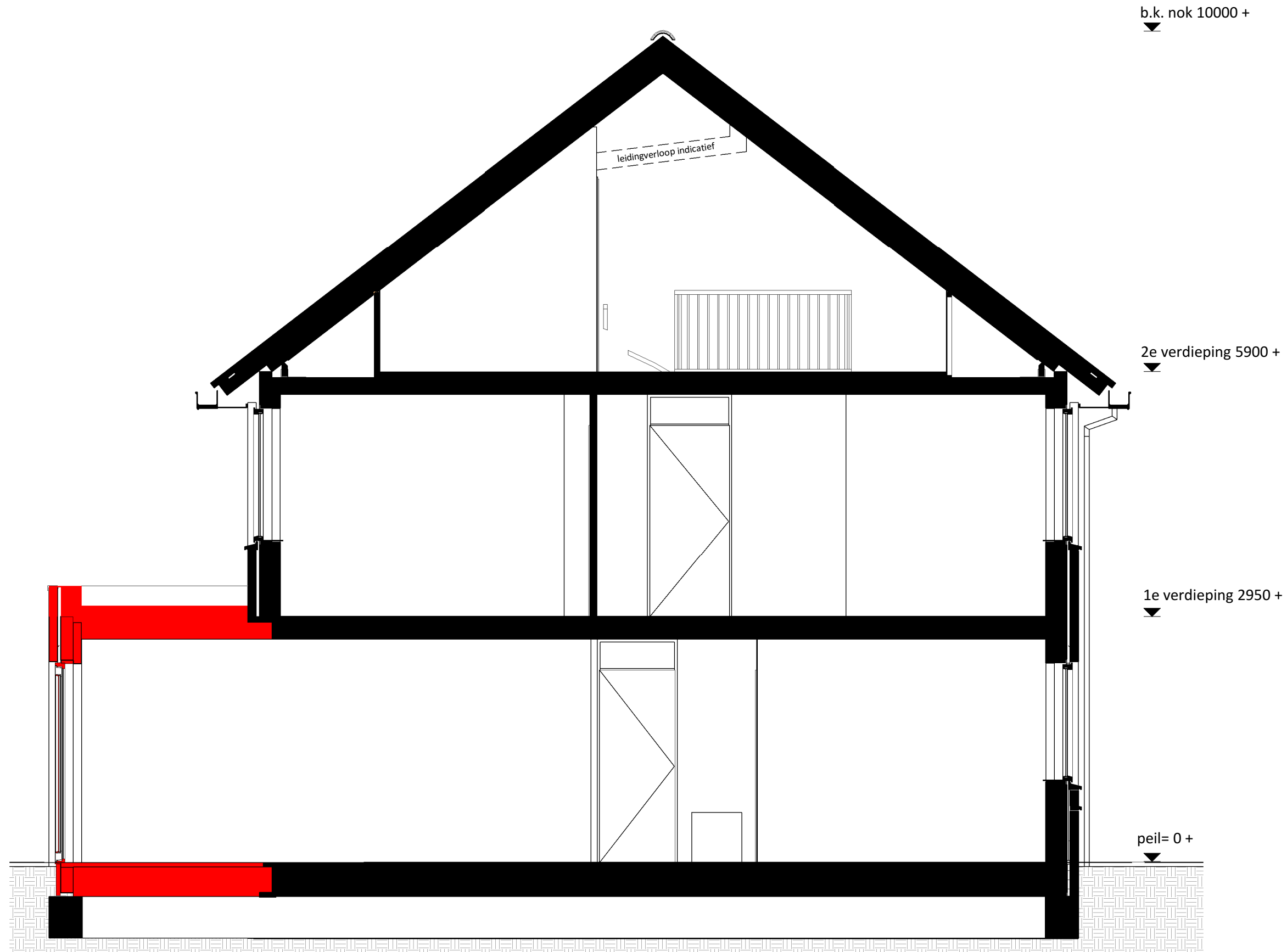
KVDK | KORBEE VAN DER KROFT ARCHITECTEN BNA



**PARK RIJNSOEVER FASE 3 | WONINGTYPE AA, BEGANE GROND, UITBOUW 2400 MM**

02-03-2020 | 16165 | BLOK 7 | TYPE AA  
 CAMPRI VASTGOED B.V.





PARK RIJNSOEVER FASE 3 | WONINGTYPE AA, DOORSNEDE, UITBOUW 2400 MM

02-03-2020 | 16165 | BLOK 7 | TYPE AA  
 CAMPRI VASTGOED B.V.

